

Moonta Mines

National Heritage Project

Accessible heritage



National
Trust

I would like to acknowledge the Narungga people, the traditional owners of the land on which we meet today and pay my respects to their Elders past, present and emerging. I extend that respect to other Aboriginal and Torres Strait Islander people who are present today.



National
Trust

Contents

- 01 Moonta Mines: Accessible and comprehensible?
- 02 Moonta Mines National Heritage Project
- 03 Objectives, outcomes and scope
- 04 Work Phases
- 05 Embedding Accessibility



Moonta Mines: Accessible and comprehensible?



National
Trust

Moonta Mines National Heritage Regeneration Project

- The Moonta Mines National Heritage regeneration project will invest in important conservation works in this National Heritage site and create new infrastructure and amenities to enhance the visitor experience and build the visitor economy for the region.
- The National Trust of South Australia will deliver the project in partnership with the Copper Coast Council and the local community, including the Narungga people on whose traditional lands the Moonta Mines site stands.
- The project is funded by the Australian Government.





National
Trust

03

Objectives

Objectives

The project has four key objectives:

- Investment in critical conservation works to preserve the site and facilitate public access.
- Developing the tourism offer by enhancing the visitor experience.
- Developing partnerships between key stakeholders and the community to promote the future potential and sustainability of the site.
- To advance positioning of the Moonta Mines site for potential World Heritage listing.



03

Outcomes

Outcomes

The project will support the following five outcomes:

- Employment during the design and construction phase of the project.
- Increased tourist visitation and spend within the town and region.
- Ongoing direct and indirect employment when the project is complete.
- Increased community activities and participation at the site.
- Enhanced community pride in its mining heritage and Cornish identity.



Project Scope

The project has four main elements:

- Conservation works on significant structures: Hughes' Pump House, Richman's Engine House, the Moonta Mines School (Museum), Taylor's Shaft and Ryan's Tunnel.
- The creation of properly signed and surfaced access trails to connect key structures and improve access and utilisation of walking and cycling options to enter and explore the Moonta Mines National Heritage site, including connecting to the Moonta-Wallaroo cycleway being constructed by the Copper Coast Council.
- A comprehensive interpretation plan to support the conservation works and infrastructure investment and enhance visitor engagement and enjoyment.
- Enhanced visitor facilities, including café, toilets, play areas and car parking.



04

Work Phases

Four phases of works

1. Conservation works to sites along Elder's Line of Lode
 - Hughes Pump House
 - Richman's Engine House
 - Taylors Shaft entry
2. Access trails to connect the Elder's Lode sites to the museum, tourist railway, tourist office and Moonta-Wallaroo cycle way.
3. Development of interpretive materials and experiences at the sites and along the trails.
4. Creation and enhancement of visitor amenities, focused on a town centre (or Kresen) adjacent to the Moonta Mines Museum (former school).





National
Trust





National
Trust



04

Work phases



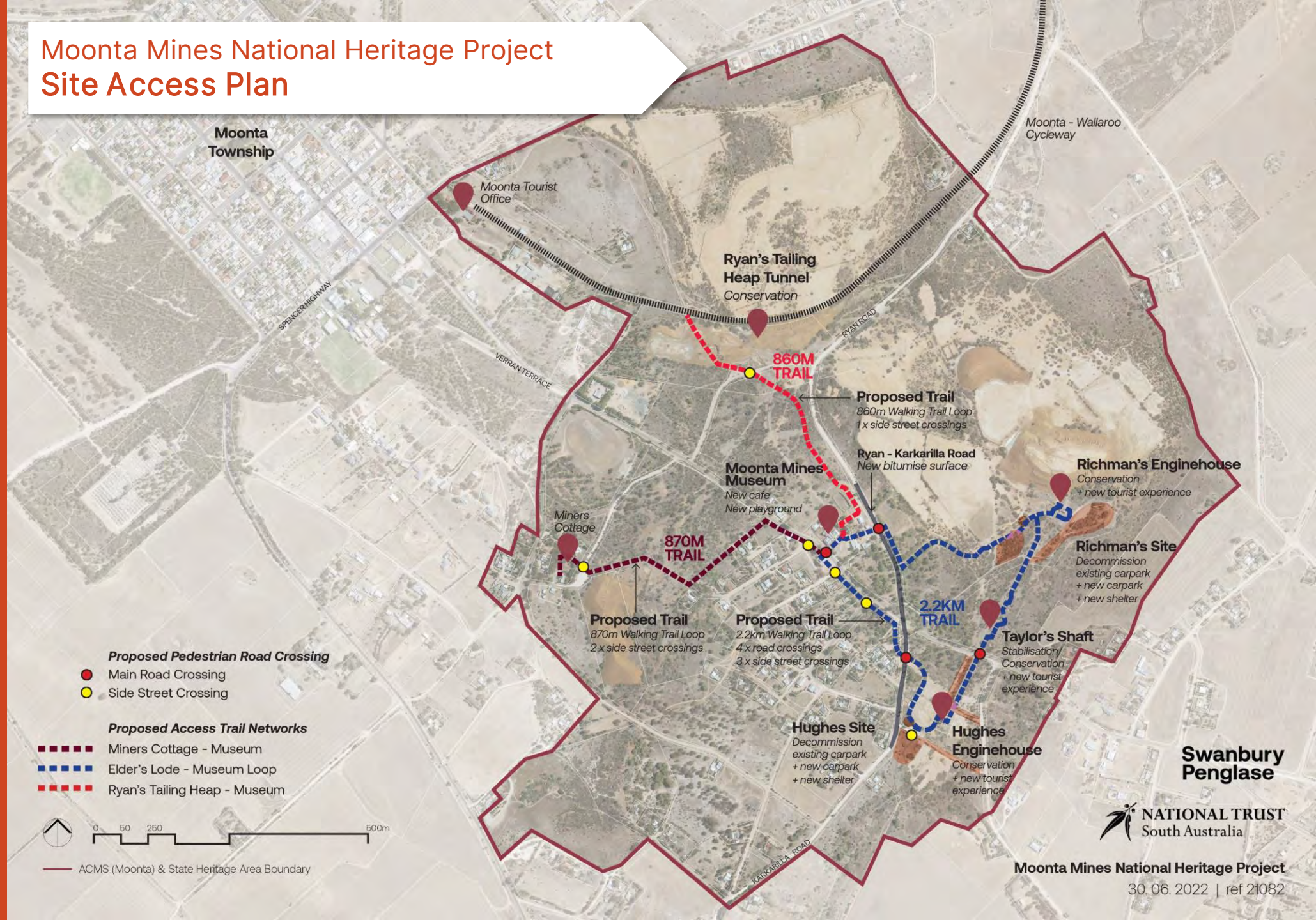
National
Trust



Moonta Mines National Heritage Project Site Access Plan

04

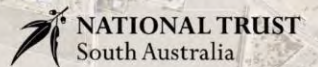
Work phases



National Trust



Swanbury
Penglas



Moonta Mines National Heritage Project

30.06.2022 | ref 21082

04

Work phases



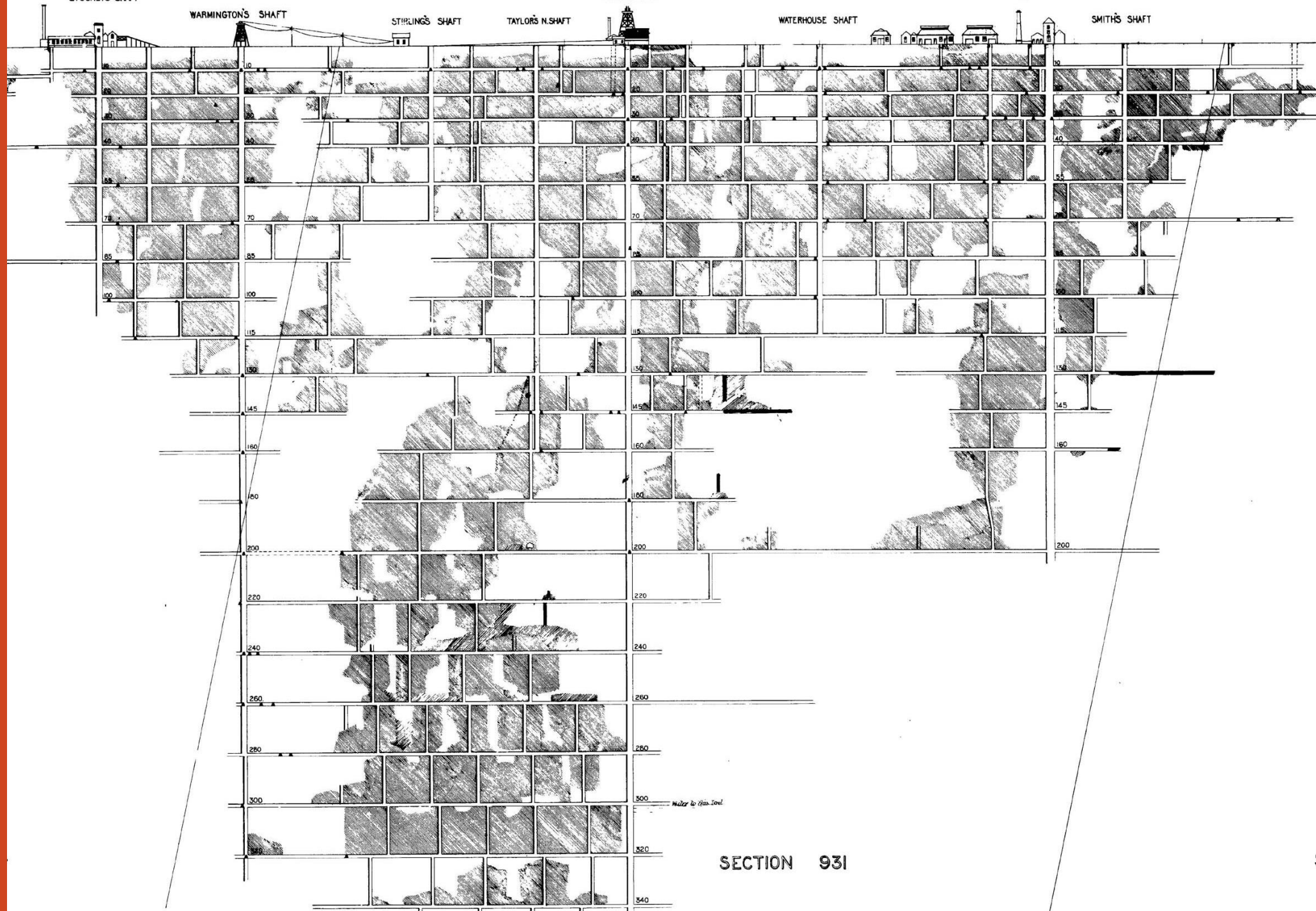
National
Trust



Embedding Accessibility – *Council of Europe recommendations*

- Carry out improvements to enhance **site safety** and to enable, as far as possible, **access by visitors with physical or sensory disabilities**.
- Carry out analyses and, in the light of these, improve **signage**.
- Devise presentation wording and methods from an ethical perspective to **respond to the diversity of the target audiences and their interpretations of the heritage**.
- Introduce **incentives for specific groups** (young people, not frequent users, etc.)
- Run **awareness-raising campaigns** (press, children's press, games/competitions, etc.)
- Produce **multilingual** presentation and interpretation material.
- Devise interactive, fun, **creative presentation methods**.
- Introduce visitors to **different ways of perceiving** the heritage.
- Develop heritage experiences combining **different forms of cultural expression** (dance, music, traditional or new skills, gastronomy, etc.) and appealing to **different sides of human nature** (senses, feelings, knowledge).
- Produce **audio visual** programmes.
- Encourage remote **virtual discovery of heritage** using the latest technologies and social networks.
- Collect and showcase **citizens' accounts** of heritage.
- Promote an **interdisciplinary approach** to heritage.





National
Trust

SECTION 931

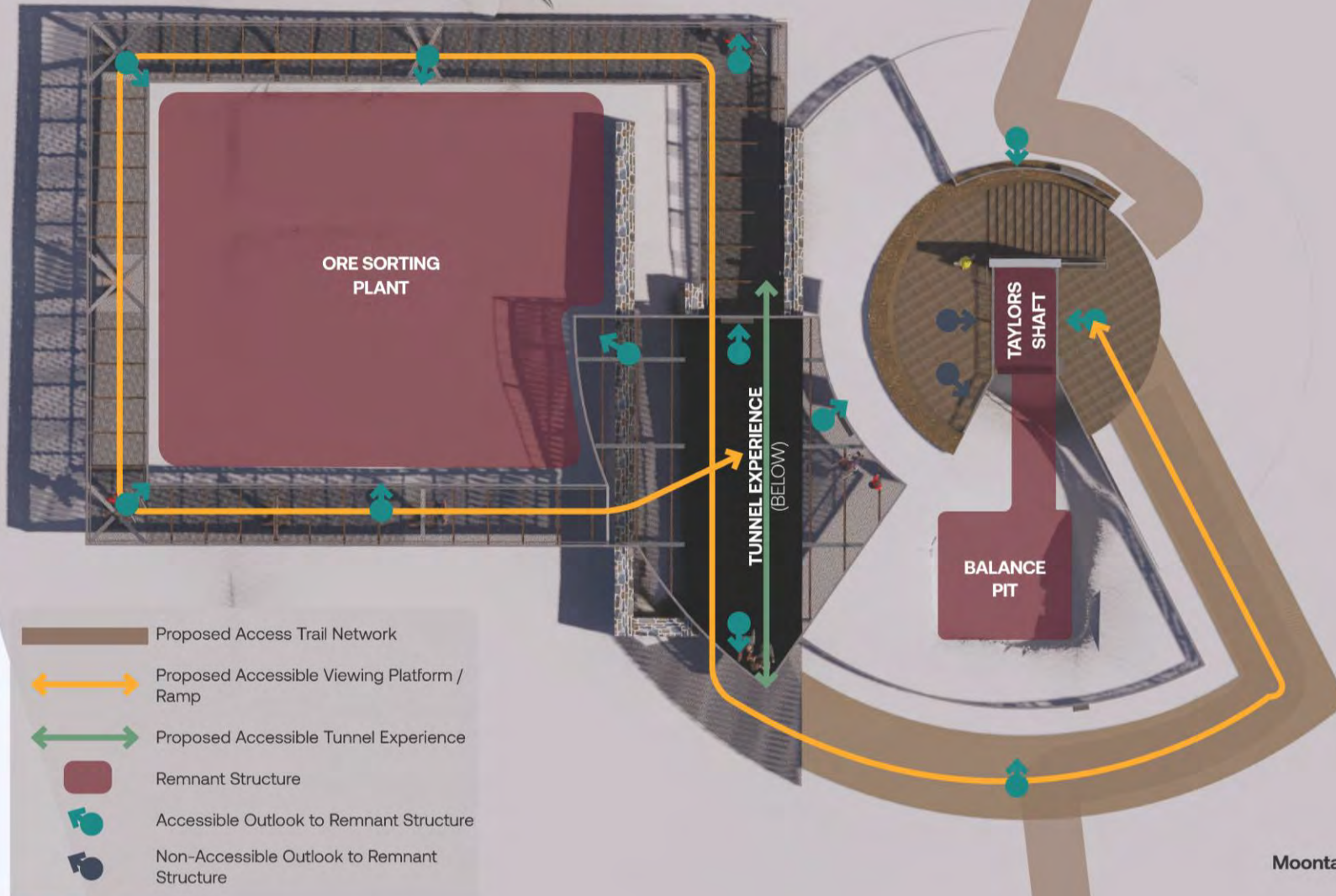


National
Trust

05

Embedding Accessibility

Taylor's Shaft Viewing Platform Accessibility Plan



05

Embedding Accessibility

Taylor's Shaft Viewing Platform Accessible views and experiences





The future of our heritage is bright- and inclusive

Moonta Mines 2.0- Launching May 2023

Join us!



**National
Trust**